

Ecology of Identity

Stefania Riccardi

February 28 – March 17, 2024

Incinerator Art Space

Starting from Roger Robinson's poem, *A Portable Paradise*, Stefania explores the theme of identity and displacement. Her work researches the layered nostalgia for familiar settings and landscapes.

1.

You Are Here, 2024

Perspex, 6 parts

106 x 112 x 0.3 cm

\$500



2.

Portable Paradises

Work produced by workshop participants, 2024

Mixed media

Variable sizes

Some NFS, some price on request.

3.

Imported Native, 2024

Mokulito matrix, wood, wax pigments, ink

Framed 42 x 52cm

\$150 framed

\$80 unframed



4.

Rural dwellings, 2024

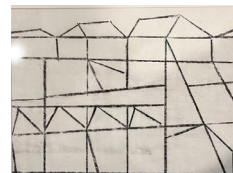
Mokulito print on Canson Edition

2/3 ed.

Framed 42 x 52cm

\$150 framed

\$80 unframed



INCINERATOR
ART SPACE

2 Small Street Willoughby NSW 2068

Wednesday to Sunday 10am-4pm

www.willoughby.nsw.gov.au/arts

Incinerator Art Space is a Willoughby City Council facility

5.
Butterflies and Hurricanes 2024
Multimedia assemblage
300x400x350cm
NFS



6.
Broom, yellow, 2024
Mokulito matrix, wood, wax pigments, ink
Mokulito print on Canson Edition
2/3 ed.
Framed 93x63cm
\$300 framed
\$160 unframed



7.
Space and Time, 2024
Interactive space, assemblage
200x150cm
NFS



8.
Genealogy, red, 2024
Mokulito print on Canson Edition
3/3 ed.
43x40cm
\$150



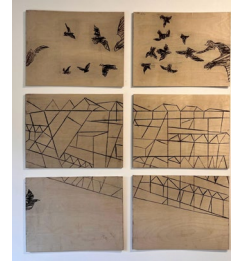
9.
Genealogy, black, 2024
Mokulito print on Canson Edition
3/3 ed.
43x40cm
\$150



INCINERATOR
ART SPACE

2 Small Street Willoughby NSW 2068
Wednesday to Sunday 10am-4pm
www.willoughby.nsw.gov.au/arts
Incinerator Art Space is a Willoughby City Council facility

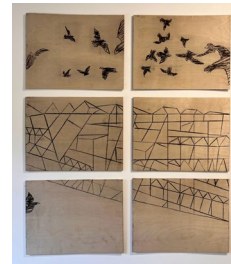
10.
The city belongs to the birds 1, 2024
6 panels
Mokulito matrix, wood, wax pigments, ink
50x38cm
\$80 individual panel



11.
The city belongs to the birds 2, 2024
12 panels
Mokulito print on Canson Edition
3/3 ed.
50x38cm
\$80 individual panel



12.
The city belongs to the birds 3, 2024
6 panels
Mokulito matrix, wood, wax pigments, ink
50x38cm
\$80 individual panel



13.
The city belongs to the birds 4, 2024
12 panels
Mokulito matrix, wood, wax pigments, ink
50x38cm
\$80 individual panel



14.
Wishing well, 2024
Assemblage
Cardboard, Perspex
115x115x168cm
NFS



Willoughby City Council is gratefully acknowledged for the provision of Incinerator Art Space.

INCINERATOR
ART SPACE

2 Small Street Willoughby NSW 2068
Wednesday to Sunday 10am-4pm
www.willoughby.nsw.gov.au/arts
Incinerator Art Space is a Willoughby City Council facility